

CHARMILL

RESIDENTIAL



Randolph Avenue, Little Venice, W9

£920

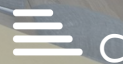
NO HMO

A charming three bedroom, two bathroom apartment positioned on the lower ground floor of a period conversion in the heart of Little Venice. This unique apartment comprises three double bedrooms, a shower room, a family bathroom, reception room and a separate fully fitted eat in kitchen. The apartment further benefits from wooden flooring throughout and a private rear garden. Randolph Avenue is positioned moments from the cafes, restaurants and shops on Clifton Road and Formosa Street and is 0.3 miles from Warwick Avenue Underground station (Bakerloo line). Paddington station is also within easy reach offering Circle, District, Bakerloo and Hammersmith & City lines together with National Rail services and the Heathrow Express providing access to Heathrow Airport in 15 minutes.

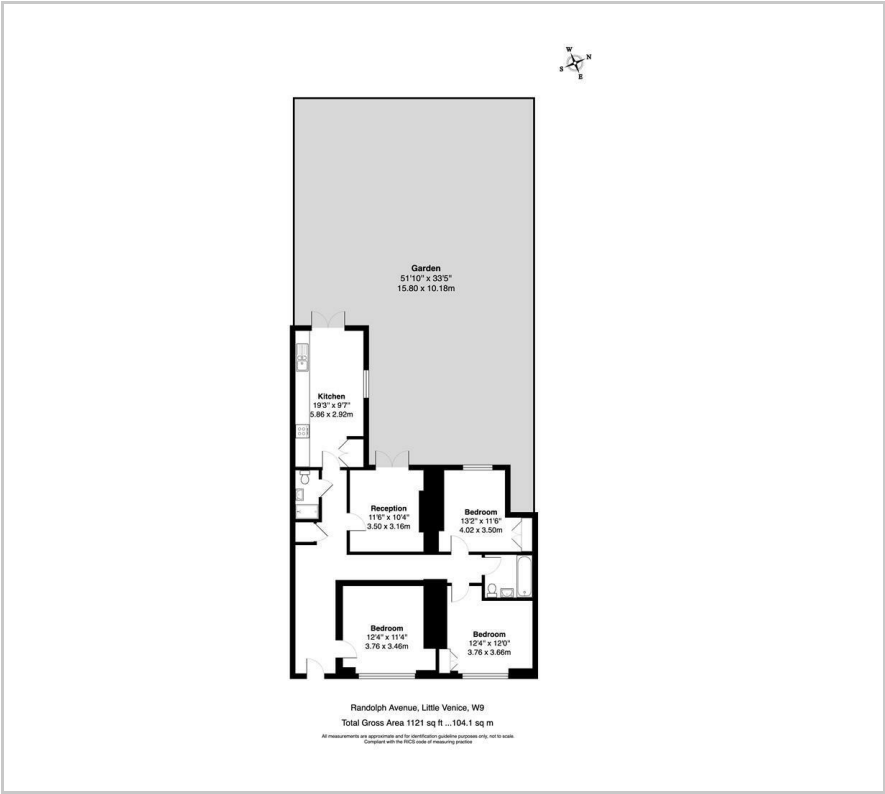
- Three bedrooms
- Shower room
- Private garden
- Eat in kitchen
- Family bathroom

Viewing

Please contact us on 020 7046 6276 if you wish to arrange a viewing appointment for this property or require further information.



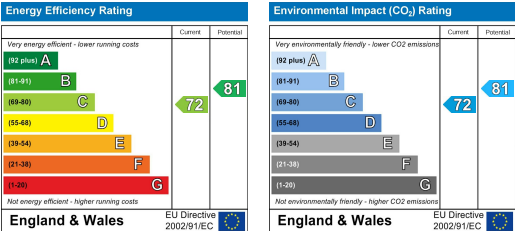
Floor Plan



Area Map



Energy Efficiency Graph



These particulars, whilst believed to be accurate are set out as a general outline only for guidance and do not constitute any part of an offer or contract. Intending purchasers should not rely on them as statements of representation of fact, but must satisfy themselves by inspection or otherwise as to their accuracy. No person in this firm's employment has the authority to make or give any representation or warranty in respect of the property.

020 7046 6276 • lettings@charmillresidential.co.uk • 51 Maida Vale, Little Venice, London W9 1SD
charmillresidential.co.uk